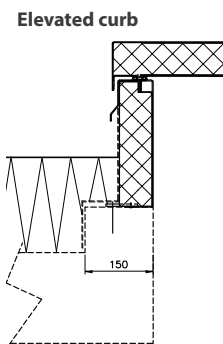
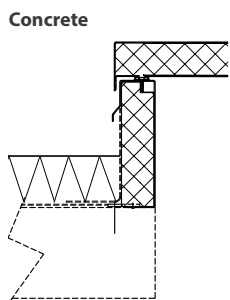
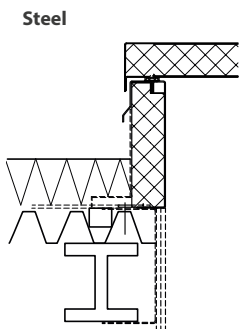
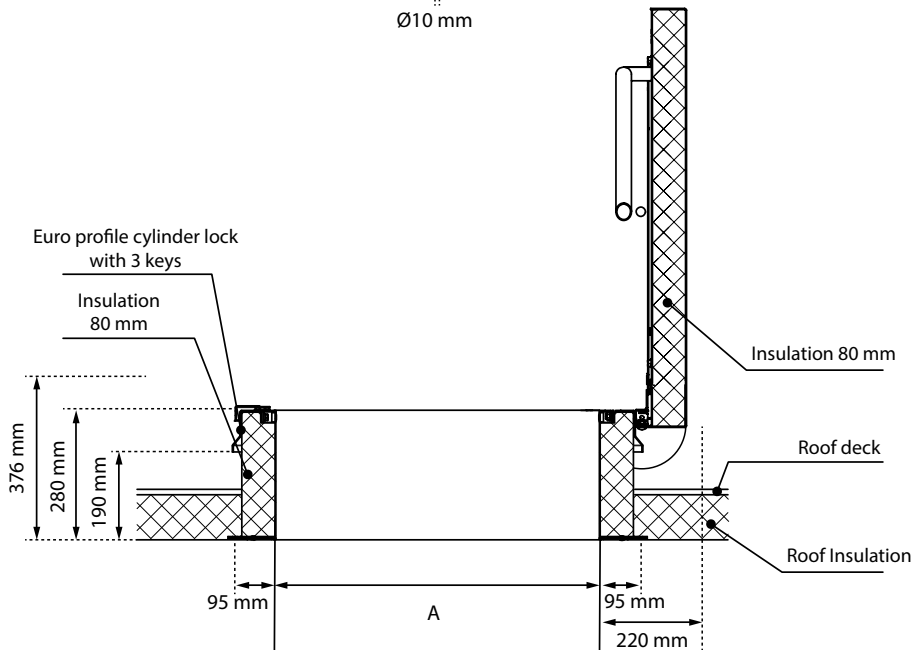
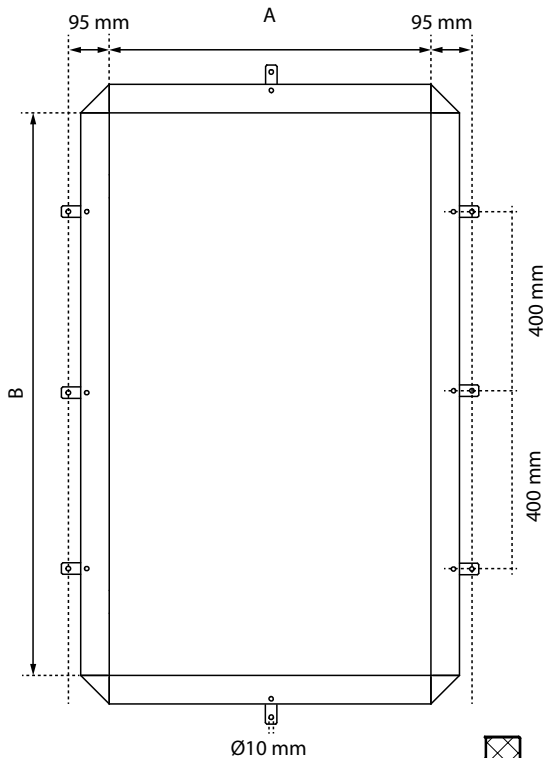
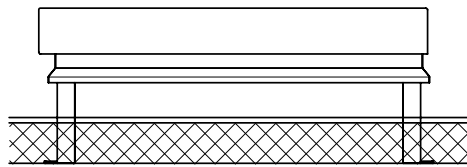


Technical Data Sheet - Roof Hatches RHT/RHTEI/RHTX



Type RHT

Roof hatch, single lid			
Type	A	B	Weight
RHT7010	700 mm	1000 mm	56 kg
RHT7014	700 mm	1400 mm	68 kg
RHT1010	1000 mm	1000 mm	65 kg
RHT1015	1000 mm	1500 mm	84 kg
RHT1020	1000 mm	2000 mm	101 kg
RHT1025	1000 mm	2500 mm	120 kg
RHT1030	1000 mm	3000 mm	134 kg

Type RHTEI

Roof hatch, fire rated 120 minutes			
Type	A	B	Weight
RHTEI7090	700 mm	900 mm	134 kg
RHTEI9090	900 mm	900 mm	157 kg
RHTEI7014	700 mm	1400 mm	185 kg
RHTEI1010	1000 mm	1000 mm	180 kg
RHTEI1015	1000 mm	1500 mm	236 kg
RHTEI1020	1000 mm	2000 mm	298 kg
RHTEI9024	900 mm	2400 mm	323 kg


Type RHTX


Roof hatch, explosion vent			
Type	A	B	Weight
RHTX1010	1000 mm	1000 mm	58 kg
RHTX1015	1000 mm	1500 mm	72 kg
RHTX1020	1000 mm	2000 mm	87 kg

Usage

Roof hatches are generally only suitable for concrete, steel and wooden roofs. On higher roofs as well. Maximum slope of the roof as per table below.

Roof hatch type	Maximum roof angle
RHT	: 30°
RHTEI	: 5°
RHTX	: 0°





Gorter Group BV
PO Box 265
NL-1740 AG SCHAGEN
The Netherlands

ETA 15/0338

Gorter Roof Hatch with thermal break (RHT)

Resistance to permanent load, concentrated and uniformly distributed (Eurocode EN 1993-1-1) : 1050 kg/m²

Thermal transmittance (EN-ISO 10077-2) : U_g ≤ 0.32 W/(m²·K)

Resistance to snow load (EN 1991-1-3) : 405 kg/m²

Resistance to wind load (EN 12210) : Class E 3000

Water tightness (EN 12208) : Class E 650

Impact, hard body (EN 356) : Class PSA

Impact, soft body (EN 13049) : Class 5

Airborne sound insulation (EN-ISO 717-1) : 26 dB

Air permeability (EN 12207) : Class 3

Content and/or release of dangerous substances : Declaration of manufacturer

Structural opening size

- The opening size of the roof hatch will match the structural opening size of the roof.
- If combined with a scissor stair attic ladder, the opening size may differ - please consult www.gortergroup.com for confirmation.

User manual and installation instructions supplied with product.

